

# Log Shear



The **GRANCO CLARK** "Quick Cycle" Log Shear is built for better metal management. The electronically controlled shear cuts the correct length of billet every time. With this process you eliminate tied up cash in an expensive inventory of billets of different lengths by simply producing billets as needed.

## Unmatched Productivity:

- Cut billets to required length without scrap

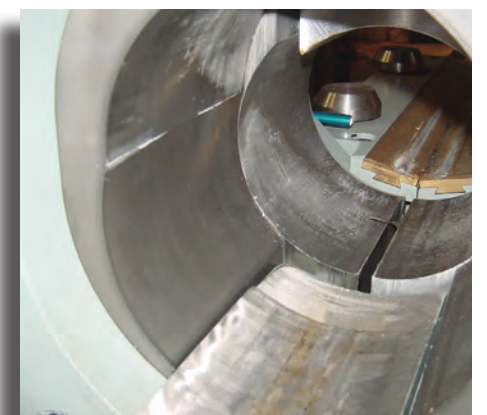
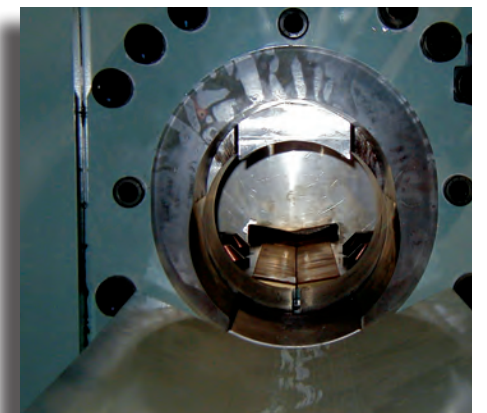
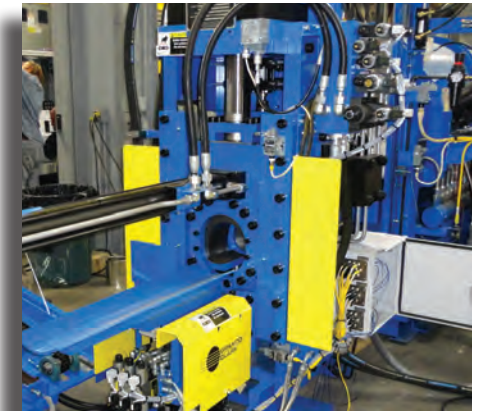
## Proven Technology:

- Innovative ring design, wide opening for trouble-free loading
- Accurate cut
- Minimal deformation

## Forward Thinking:

- Compensation cut
- Billet storage gear

- Billets sheared to length as needed for reduced inventory
- Multiple operating modes provide greater flexibility
- Selectable "no scrap" mode maximizes recovery
- Specially designed precision clamping system for superior cut
- Innovative shear ring design for minimal deformation
- Engineered for quick cycles and increased throughput
- Billet storage gear automatically transfers short compensation-cut pieces back to furnace
- Usable with precut billets in addition to one-piece and sawn-face-to-sawn-face cycles



- No Saw Kerf Concerns
- Fast Cycle Times
- No Scrap Capable with Compensation Cut Algorithm



100% USA Supply



AEC Member and Supporter

Fully Assembled and Shop Tested





## Extrusion expertise that's always within reach

### U.S.A.

#### Headquarters

7298 N. Storey Road  
Belding, MI USA 48809  
Phone: +1-616-794-2600  
Toll-free: +1-800-918-2600  
General fax: +1-616-794-1899  
Sales fax: +1-616-794-2878

e-mail: [gcinfo@grancoclark.com](mailto:gcinfo@grancoclark.com)

### Dubai

#### Dubai, United Arab Emirates

ALTEAM FZE  
PO Box 213160  
Dubai, United Arab Emirates

Contact: Hovig Karayan  
PH +971 (4) 441 9785  
FX +971 (4) 421 9737  
e-mail: [alteam.dubai@gmail.com](mailto:alteam.dubai@gmail.com) or  
[info@alteamfze.com](mailto:info@alteamfze.com)

### India

#### India

Hetpan Overseas  
B-407/408, Kailash Esplanade  
L.B.S. Margbr Ghatkopar (West)  
Mumbai India 400 086  
PH +91-22-2500 7038  
FX +91-22-2500 7336

Contact: Ketan Sheth  
e-mail: [ketansheth@hetpan.net](mailto:ketansheth@hetpan.net)  
web site: [www.hetpan.net](http://www.hetpan.net)

### Australia

#### Australia, New Zealand

Furnace Engineering Pty Ltd  
50 Howleys Road  
Notting Hill VIC 3168  
Australia  
PH +61-3 9544 2922  
FX +61-3 9544 2723

Contact: Jason Reints  
[info@furnace.com.au](mailto:info@furnace.com.au)

### Brazil

#### Commerx LTDA

Alameda Ametista, 189  
06540225 Santana de Parnaiba, SP,  
Brazil  
PH/FX +55-11-4152 3610

e-mail: [fred@commerx.com.br](mailto:fred@commerx.com.br)  
web site: [www.commerx.com.br](http://www.commerx.com.br)

### Thailand

#### Pathakit Company, Ltd

69/131 Moo 5, Bueng Khamproi  
Lam Lukka Road, Lam Lukka  
Pathumthani, 12150 Thailand  
PH +66-2-532 7044  
FX +66-2-532 7045

Contact: Saratoon Laisakul  
e-mail: [saratoon@ksc.th.com](mailto:saratoon@ksc.th.com)

7298 N. Storey Road  
Belding, MI 48809

+1-800-918-2600  
[gcinfo@grancoclark.com](mailto:gcinfo@grancoclark.com) | [www.grancoclark.com](http://www.grancoclark.com)



Form: GCB0110316-V2